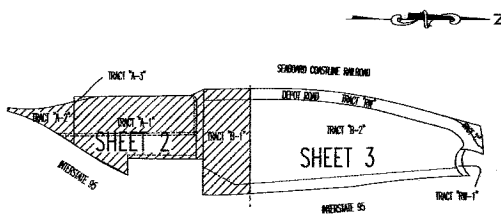


HISTORIC DEPOT SQUARE

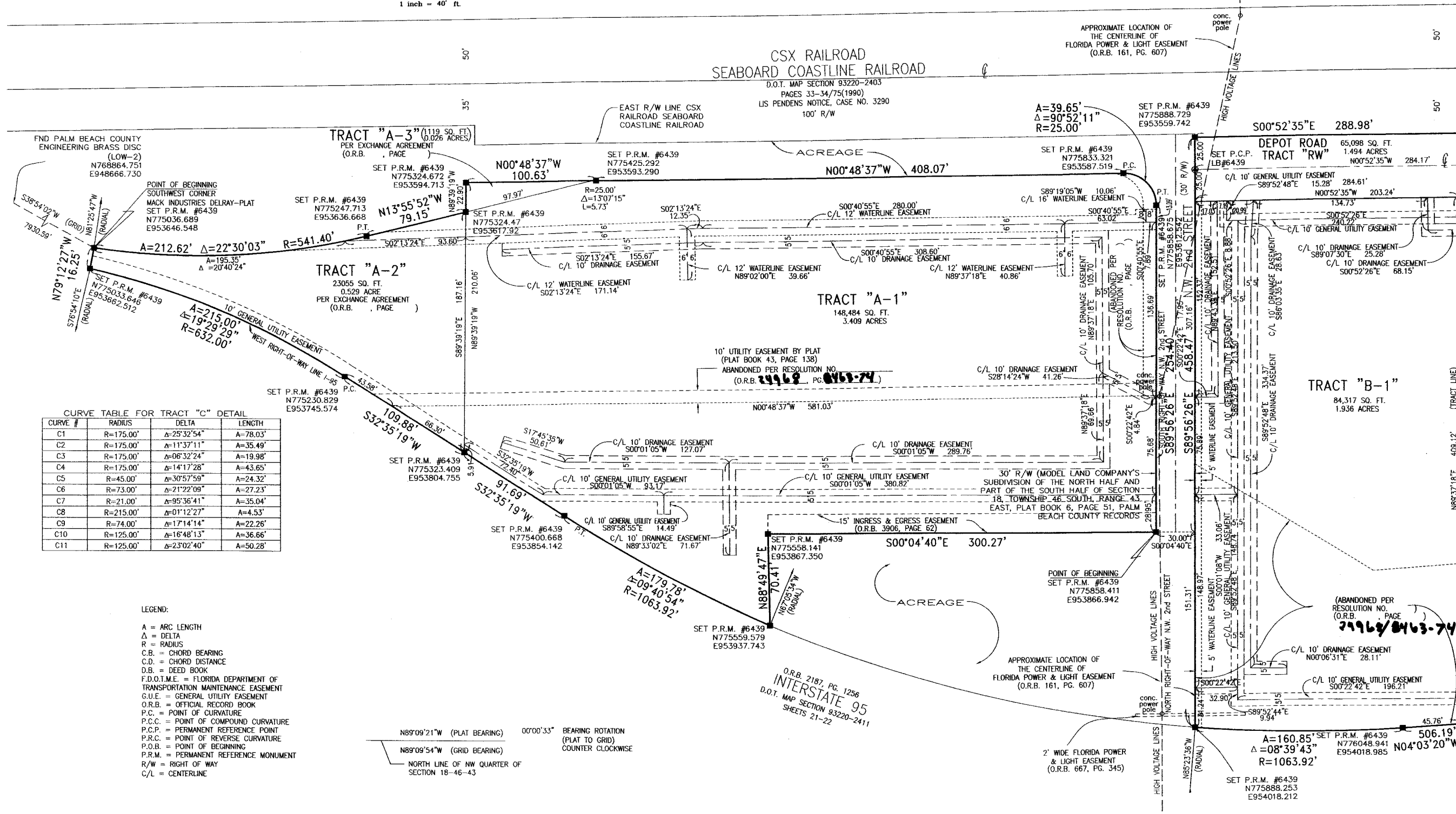
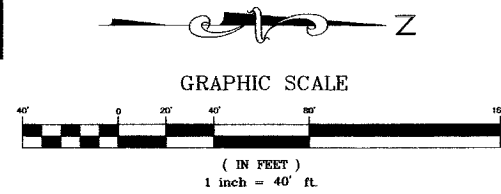
BEING A REPLAT OF PART OF SECTION 18, TOWNSHIP 46 SOUTH, RANGE 43 EAST AND
ALL OF THE PLAT OF MACK INDUSTRIES-DELRAY
PLAT BOOK 43, PAGE 138, PUBLIC RECORDS OF PALM BEACH COUNTY, FLORIDA
CITY OF DELRAY BEACH, PALM BEACH COUNTY, FLORIDA, 2011

SHEET 2 OF 3

THIS INSTRUMENT WAS PREPARED BY ERNEST W. DUNCAN IN THE OFFICE OF
BASELINE ENGINEERING AND LAND SURVEYING INC.
1400 N.W. 1st COURT, BOCA RATON, FL. 33432 (561) 417-0700



SHEET INDEX



CURVE TABLE FOR TRACT "C" DETAIL

CURVE #	RADIUS	DELTA	LENGTH
C1	R=175.00'	Δ=25°32'54"	A=78.03'
C2	R=175.00'	Δ=11°37'11"	A=35.49'
C3	R=175.00'	Δ=06°32'24"	A=19.98'
C4	R=175.00'	Δ=14°17'28"	A=43.65'
C5	R=45.00'	Δ=30°57'59"	A=24.32'
C6	R=73.00'	Δ=21°22'09"	A=27.23'
C7	R=21.00'	Δ=95°36'41"	A=35.04'
C8	R=215.00'	Δ=01°12'27"	A=4.53'
C9	R=74.00'	Δ=17°14'14"	A=22.26'
C10	R=125.00'	Δ=16°48'13"	A=36.66'
C11	R=125.00'	Δ=2°02'40"	A=50.28'

LEGEND:
 A = ARC LENGTH
 Δ = DELTA
 R = RADIUS
 C.B. = CHORD BEARING
 C.D. = CHORD DISTANCE
 D.B. = DEED BOOK
 F.D.O.I.M.E. = FLORIDA DEPARTMENT OF TRANSPORTATION MAINTENANCE EASEMENT
 G.U.E. = GENERAL UTILITY EASEMENT
 O.R.B. = OFFICIAL RECORD BOOK
 P.C. = POINT OF CURVATURE
 P.C.C. = POINT OF COMPOUND CURVATURE
 P.C.P. = PERMANENT REFERENCE POINT
 P.R.C. = POINT OF REVERSE CURVATURE
 P.O.B. = POINT OF BEGINNING
 P.R.M. = PERMANENT REFERENCE MONUMENT
 R/W = RIGHT OF WAY
 C/L = CENTERLINE

N89°09'21"W (PLAT BEARING) 00°00'33" BEARING ROTATION (PLAT TO GRID) COUNTER CLOCKWISE
 N89°09'54"W (GRID BEARING)
 NORTH LINE OF NW QUARTER OF SECTION 18-46-43

MATCH LINE
(SEE SHEET 3 OF 3)